



City of Hogansville
City Council
Work Session Meeting Agenda
Monday, March 4, 2024 – 5:30 pm

Meeting will be held at Hogansville City Hall

Mayor: Jake Ayers	2025	City Manager: Lisa E. Kelly
Council Post 1: Michael Taylor, Jr *	2025	Assistant City Manager: Niles Ford
Council Post 2: Matthew Morgan	2025	City Attorney: Alex Dixon
Council Post 3: Mandy Neese	2027	Chief of Police: Jeffrey Sheppard
Council Post 4: Mark Ayers	2027	City Clerk: LeAnn Lehigh
Council Post 5: Kandis Strickland	2027	* Mayor Pro-Tem

WORK SESSION – 5:30 pm

ORDER OF BUSINESS

1. Playground Options for Strozier Park
2. Connection Fees
3. Financial Services

Table I – Detailed City of Hogansville’s Recommended Residential Connection Fees

Project	Cost	Zone RDV	Zone 1	Zone 2	Zone 3	Zone 4	Zone 5
1. Hunt Club/Yellowjacket Interceptor	\$1,324,000	X				X	
2. Hummingbird Estates Sewer Upgrade	\$1,430,000	X					X
3. Hummingbird Estates PSTA	\$1,605,000	X					X
4. Oak/Ware Interceptor	\$1,048,000	X				X	
5. Yellowjacket Creek Interceptor Phase 1	\$1,088,000	X	X		X		X
6. Wastewater Plant	\$20,000,000	X	X	X	X	X	X
7. Highway 54 Interceptor	\$2,735,000	X	X	X	X	X	X
8. Main St/Blue Creek Road Interceptor	\$2,884,000	X					X
9. Yellowjacket Creek Interceptor Phase 2	\$3,527,000	X	X		X		X
10. Water Lines	\$4,147,200	X	X		X	X	X
11. Elevated Water Tank	\$2,000,000	X			X		X
12. Ingles Phase 3	\$322,000	X			X		
13. Ingles Phase 2	\$1,398,000	X			X		
14. Ingles Phase 1	\$389,000	X			X		
	Cost	Zone RDV	Zone 1	Zone 2	Zone 3	Zone 4	Zone 5
Cost of Projects	\$43,897,200		\$31,497,200	\$22,735,000	\$35,606,200	\$29,254,200	\$39,416,200
Portion of Total Improvements Attributed to Zone			72%	52%	81%	67%	90%
Cost Per Home		\$3,000	\$10,300	\$7,500	\$11,700	\$9,600	\$12,900
# of Homes Anticipated		25	250	40	1,950	140	620
Revenue	\$35,032,000	\$75,000	\$2,575,000	\$300,000	\$22,815,000	\$1,344,000	\$7,998,000

Note: Flow at WPCP is currently 400,000 gpd average (excluding Meriwether County) and 910,000 gpd in the peak month with 1,500 customers (275 gpd/customer). Plant is permitted for 1.5 MGD (1.25 MGD for Hogansville). It is expected that after 1,000 homes are connected the City will see occasional months with flow higher than the permit limit. After 3,000 homes are added the flow is expected to be above the permit limit most months.

Table II - Detailed City of Hogansville's Recommended Commercial Connection Fees

<i>Meter Size</i>	<u><i>1-inch Meter</i></u>		<i>Total Connection Fee</i>
	<i>Tap Fee</i>	<i>Capacity Recovery Fee</i>	
Water	\$1,500	\$1,000	\$2,500
Sewer	\$2,300	\$6,900	\$9,200
Total	\$3,800	\$7,900	\$11,700

<i>Meter Size</i>	<u><i>2-Inch Meter</i></u>		<i>Total Connection Fee</i>
	<i>Tap Fee</i>	<i>Capacity Recovery Fee</i>	
Water	\$3,250	\$9,750	\$13,000
Sewer	\$5,000	\$15,000	\$20,000
Total	\$8,250	\$24,750	\$33,000

<i>Meter Size</i>	<u><i>3-Inch Meter</i></u>		<i>Total Connection Fee</i>
	<i>Tap Fee</i>	<i>Capacity Recovery Fee</i>	
Water	\$7,500	\$22,500	\$30,000
Sewer	\$16,750	\$50,250	\$67,000
Total	\$24,250	\$72,750	\$97,000

<i>Meter Size</i>	<u><i>4-Inch Meter</i></u>		<i>Total Connection Fee</i>
	<i>Tap Fee</i>	<i>Capacity Recovery Fee</i>	
Water	\$11,250	\$33,750	\$45,000
Sewer	\$21,250	\$63,750	\$85,000
Total	\$32,500	\$97,500	\$130,000

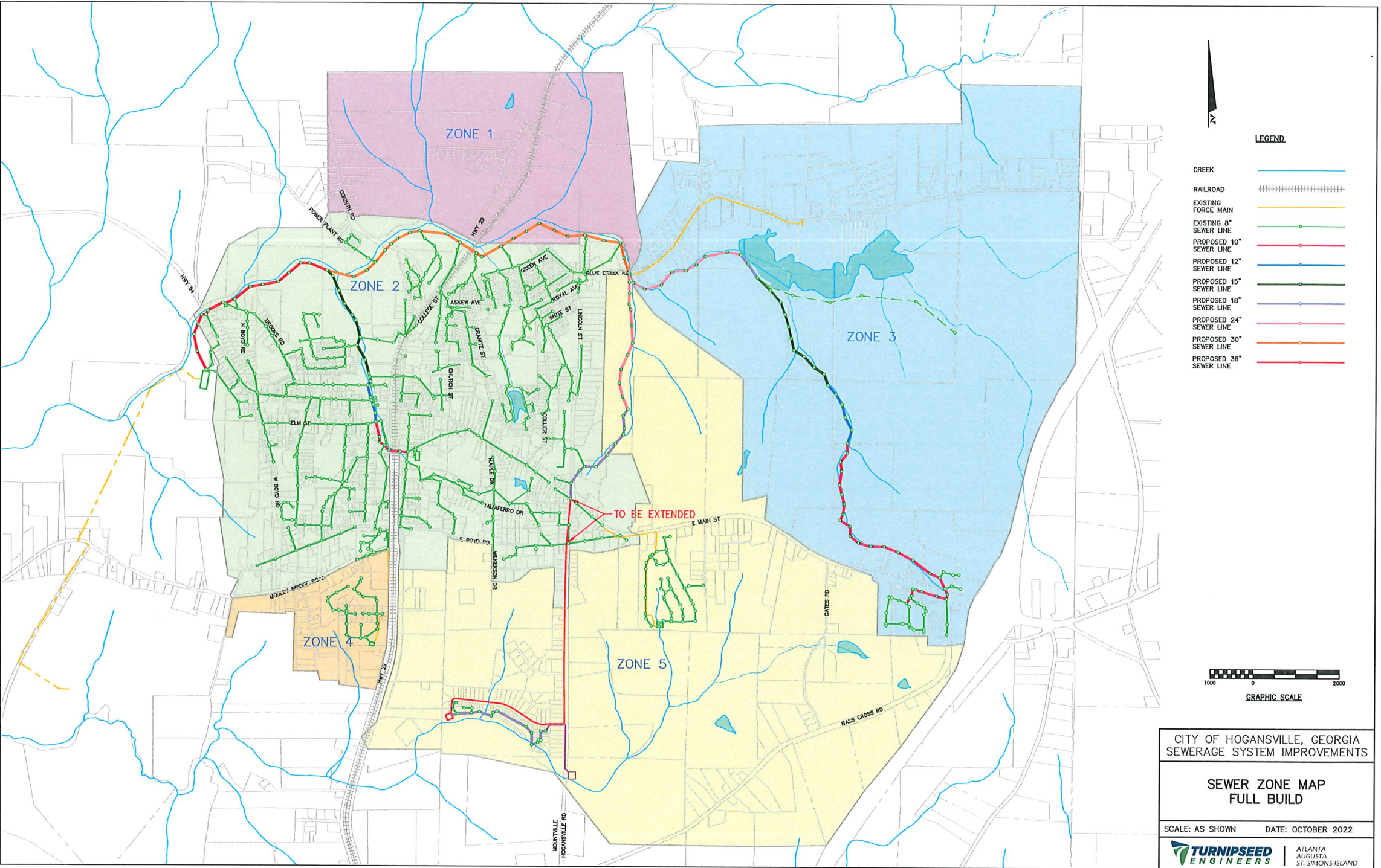
<i>Meter Size</i>	<u><i>6-Inch Meter</i></u>		<i>Total Connection Fee</i>
	<i>Tap Fee</i>	<i>Capacity Recovery Fee</i>	
Water	\$21,250	\$63,750	\$85,000
Sewer	\$31,250	\$93,750	\$125,000
Total	\$52,500	\$157,500	\$210,000

Table III – Tap Fee Comparison (Water & Sewer)

<i>Owner</i>	<i>¾"</i>	<i>1"</i>	<i>2"</i>	<i>3"</i>	<i>4"</i>	<i>6"</i>
Bartow County	\$10,305	\$16,761	\$52,995	\$94,428	\$147,369	\$288,564
Dawsonville	\$9,250	\$12,750	\$31,000	\$56,000	\$91,000	\$136,000
Gwinnett County	\$5,275	\$16,880	\$73,322	\$183,043	\$293,818	\$586,580
Fayetteville	\$2,778	\$4,064	\$10,285	\$17,285	\$32,441	\$59,826
LaGrange	\$4,500	\$5,500	\$19,800	Calculated	Calculated	Calculated
Temple	\$10,750	\$13,900	\$29,600	\$51,500	\$95,000	\$170,500
Senoia	\$6,720	\$9,176	\$27,851	Calculated	Calculated	Calculated



P:\Hogansville\311731 Miscellaneous Services\028 Citywide Sewer Basin Study\CITYWIDE SEWER MAP.dwg





ACCOUNT REP: Courtney May
courtney@playgroundboss.com
1-800-878-0320 ext. 101

QUOTE #: 021624-18212
DATE CREATED: 02-16-2024
Quote is valid for 30 days

PROJECT CONTACT

PROJECT CONTACT: Niles Ford
COMPANY: Hogansville GA
ADDRESS: 109 High St
Hogansville, GA 30230
EMAIL: niles.ford@cityofhogansville.org
PHONE: 706-637-8629



SHIP TO / SITE CONTACT

SHIPPING / SITE CONTACT: Niles Ford
COMPANY: Hogansville GA
SHIP TO ADDRESS: 109 High St
Hogansville, GA 30230
EMAIL: niles.ford@cityofhogansville.org
PHONE: 706-637-8629

COMMENTS AND SPECIAL INSTRUCTIONS: Price quoted for materials, installation and delivery only. Price excludes sitework, concrete, underground line location, permits, liftgates, & impact fees unless specifically noted below. Customer is responsible for any taxes that may apply. If order is cancelled a 25% restocking fee may be assessed

QTY	PRODUCT	PRICE	DISCOUNT	TOTAL
1	Power Play SKU: PGB-39483 Variants: COLOR SCHEME: Natural FREE SHIPPING - Age: 2 to 12, Child Capacity: 49, Play Activities: 17, Safety Use Zone: 46ft x 36ft	\$ 98,528	\$49,264	\$ 49,264
1	Rubber Mulch SKU: RUBBERMULCH Variants: COLOR: Brown IPEMA certified Rubber Mulch @ 6 inch depth 13 tons	\$ 11,000		\$ 11,000
2	Filter Fabric - Weed Barrier SKU: PGB-CSP4300BLK FREE SHIPPING - Contractor Select Plus Landscape Fabric - 4ft x 300ft. **** 1 Roll Accommodates 1,100 Sqft ***	\$ 232		\$ 464
44	8in Plastic Landscape Timber with Spike - KT SKU: PGBTB-5208-KT 8 Plastic Landscape Border Timber with Stake	\$ 41		\$ 1,804
1	Construction Debris Disposal SKU: PGBCONDEDIS Removal and disposal of construction debris packing material, and shipping crates.	\$ 895		\$ 895
	Professional Installation SKU: INSTALL	\$ 21,114		\$ 21,114
	Customer Installation Note PLAY AREA: 48 x 40 -Installation over dirt and grass -Area accessible with water and electricity access			
	Shipping And Freight Charges SKU: SHIPPING Delivery of products to supplied shipping address rubber mulch, timbers	\$ 1,000		\$ 1,000

I APPROVE THIS PROJECT. Let's do this!

Approval of this proposal may be executed by signing below and emailing back to the contact information listed below. Unless prior arrangements are approved, payment is due upon ordering.

Account Rep: Courtney May
courtney@playgroundboss.com
1-800-878-0320 ext. 101

Authorized Purchaser: _____

Date: _____

Subtotal \$ 85,541

Tax \$ 0

\$ 85,541

Have questions about this quote?

→ **CALL US**
1-800-878-0320

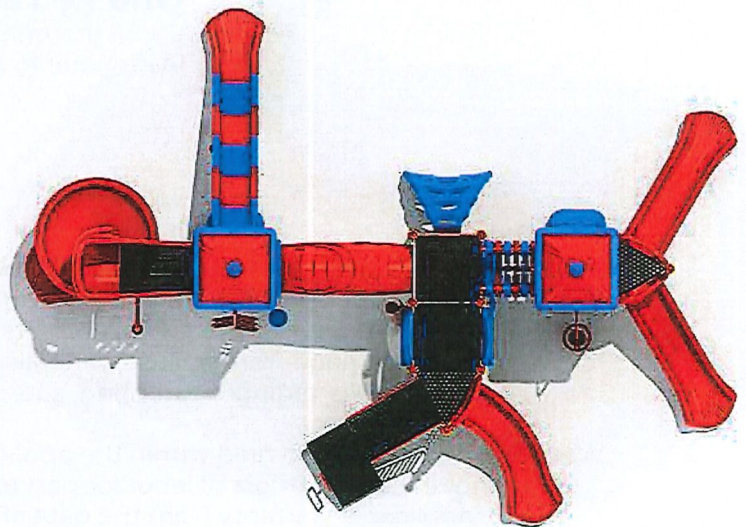


Ages
2 to 12

Use Zone: 46ft x 36ft
Child Capacity: 49
Play Activities: 17

Power Play

SKU: PGB-39483



 Call Us

1-800-878-0320

PlaygroundBoss.com



Warranty

100
15
5
3
1

One Hundred (100) Year Limited Warranty

On aluminum and steel upright posts, hardware, post caps, and clamps against structural failure due to deterioration, corrosion, or workmanship.

Fifteen (15) Year Limited Warranty

On rails, rungs, rigid climbers, loops, HDPE and rotationally molded plastic components, and decks against structural failure due to deterioration, corrosion, or workmanship.

Five (5) Year Limited Warranty

On cables and nets against premature wear due to natural deterioration or manufacturing defects. On moving parts against structural failure due to materials or workmanship.

Three (3) Year Limited Warranty

On all blow molded plastics against structural failure due to materials, or workmanship.

One (1) Year Limited Warranty

On all materials and products not covered above against failure due to materials or workmanship.

Playground Boss warrants to its original customer for as long as the original customer owns the product and uses the product with regular use and installation in accordance with published specifications to be free from defects in materials and workmanship. This warranty does not cover damage from misuse, vandalism, modified parts, or damage such as dents, scratches, fading/weathering, acts of God, and normal wear and tear.

Warranty claims must be filed within the applicable warranty period. Warranty replacement does not include the cost of labor for part replacement. Replacement parts carry the applicable warranty from the date of shipment of the replacement part.



Call Us
1-800-878-0320

PlaygroundBoss.com



PO Box 492467
Atlanta, GA 30349
(770) 719-9005

Date: 2.27.2024
Quote #: HGVL2.24.02
Rep: Tom Bengtson
Direct: (770) 823-8487

QUOTATION

	Bill to:	Ship to:
Name	City of Hogansville	NEED INFO
Address	111 High Street	
City, State Zip	Hogansville, GA 30230	
Contact/Phone	Niles Ford (706)637-8629	
Email	niles.ford@cityofhogansville.org	County: Troup

Qty	Model Number	Description	Unit Price	TOTAL AMOUNT
1	SY-3411	Composite Play Structure for ages 2-12. (SY-3411) User Capacity: 65, Play Events: 13. ASTM Use Zone: 41'x35'		\$ 43,459.00
1		28'x30'x14'H Four Post Hip Shade (In-Ground Mount)		\$ 12,833.00
2		Traditional Bench w/ back (6' In-Ground Mount)	\$ 758.00	\$ 1,516.00
2000	EPDM	EPDM Pour-In-Place Rubber (Installed) w/ 3" stone base for 6' Fall Height 75% Green/25% Black	\$ 21.00	\$ 42,000.00
Less Burke's "Early Bird Sale" pricing for SY-3411 Sale Ends 3.27.2024. All signed documents and color approvals must be received before 3.22.2024				\$ (13,907.00)
Note to Customer This quote does not include any site prep, borders or drainage. Pour-In-Place surfacing requires a 1% gradient. Please schedule a meeting with sales rep for site evaluation. Tom Bengtson (770)823-8487				
NOTES: *This quote is valid for 30 days only. Please allow 12-16 weeks lead time for production, transit and installation. **Please return this signed quote along with the official Purchase Order OR required 50% deposit to initiate the order. The balance is due in full within 15 days after delivery. *Care will be taken, but PlaySouth is not responsible for landscaping and grass that is accidentally damaged during this construction project. * Any necessary utility relocation is sole responsibility of the customer. Please locate utilities prior to ordering equipment.				

COLORS:

NEED INFO

Sales Tax Rate
Installation Svcs.

SubTotal	\$ 85,901.00
Freight	\$ 6,150.00
	\$ 25,980.00
GRAND TOTAL	\$ 118,031.00

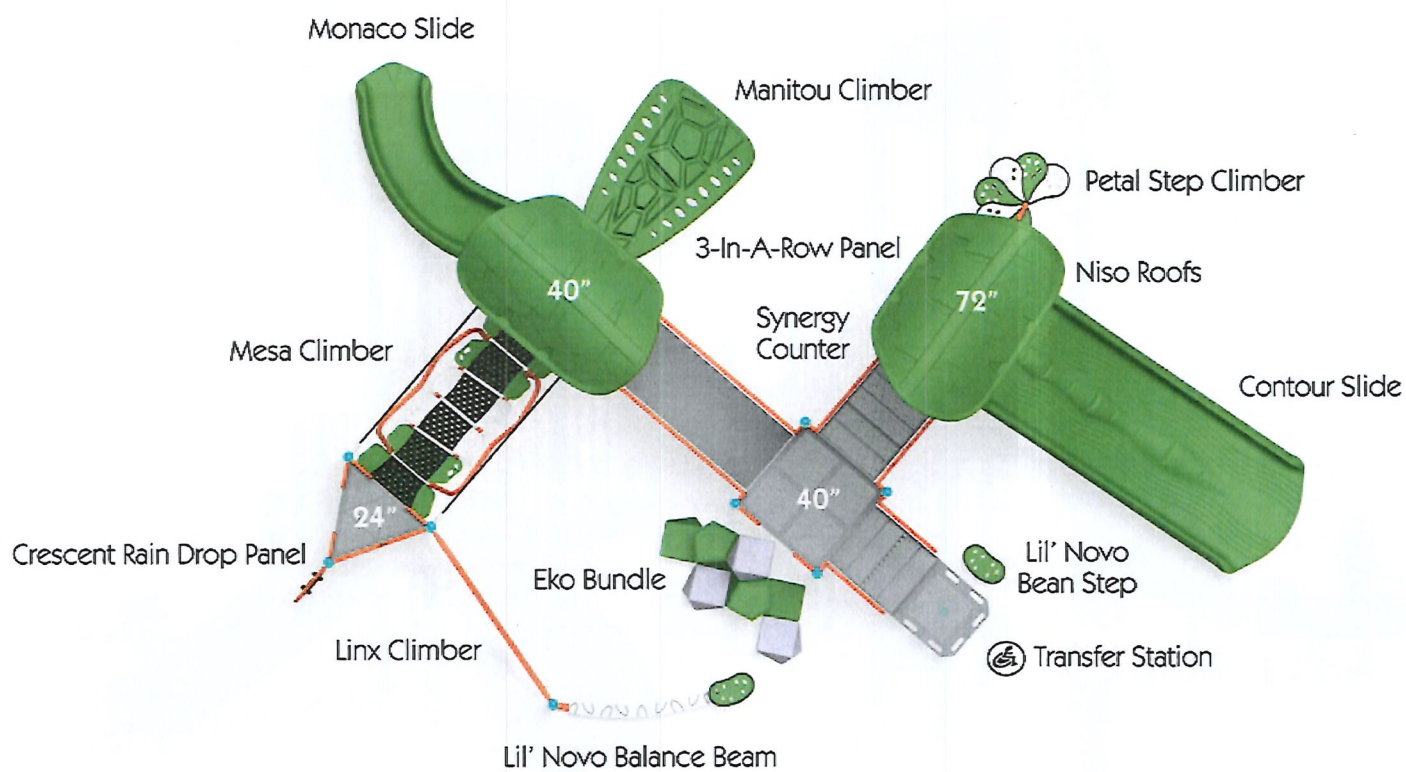
Authorized signature & date:

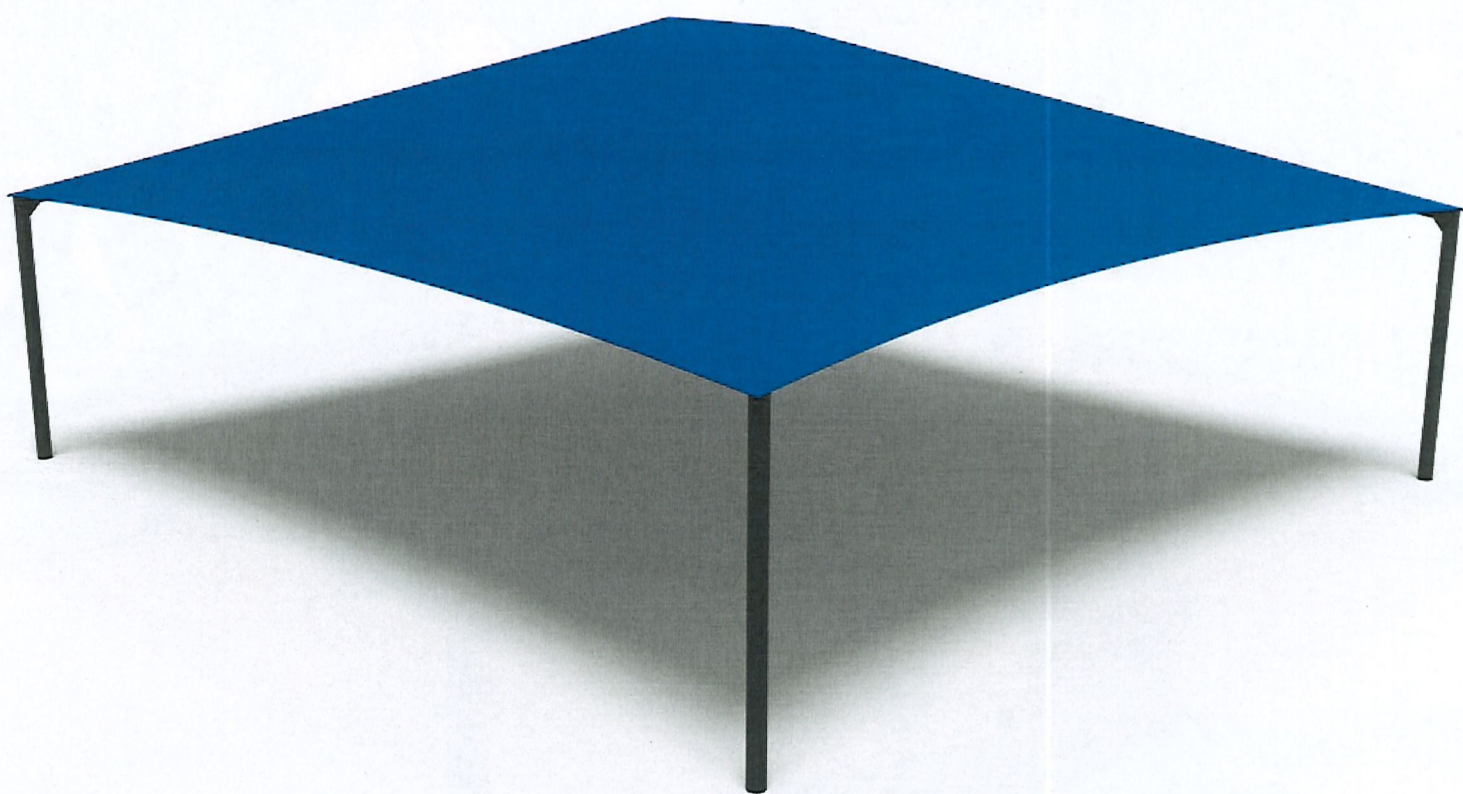
A deposit payment of 50% deposit of the Grand Total amount is required before an order can be placed.
Your signature, date and color selections must be completed above for order acceptance.
Full payment is due within 15 days after completion. Standard rock clause will apply to installation services.

Thank you for considering PlaySouth Playground Creators!!













Rubber Designs
Better for the earth. Better for you.

EPDM POUR-IN-PLACE

FEATURES

EPDM Pour-In-Place (PIP) is a durable unitary surface for playgrounds. The two layer system is comprised of a bottom rubber attenuation layer (buffings) and a top wear layer (EPDM). This system is installed at different thicknesses to accommodate designated critical fall height. The PIP provides a highly accessible surface allowing play for children and adults of all abilities. A wide range of colors enables you to include design elements in your surface.

SPECIFICATIONS

- Attenuating layer consists of recycled shredded rubber buffings and is installed per your equipment's requirements.
- Wear course is installed at 1/2" thick and consists of Gezolan Branded EPDM granules combined with a urethane bonding agent
- Asphalt, concrete, or compacted stone base are suitable sub-bases



COLOR OPTIONS

STANDARD COLORS



BEIGE



BLUE

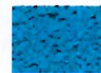


GREEN



RED

PREMIUM COLORS*



BRIGHT BLUE



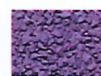
DARK BLUE



DARK GREEN



PINK



LILAC



BRIGHT RED



BRIGHT GREEN



BRIGHT YELLOW



YELLOW



BRIGHT ORANGE



BEIGE BROWN



BROWN



WHITE



EGGSHELL



GRAY



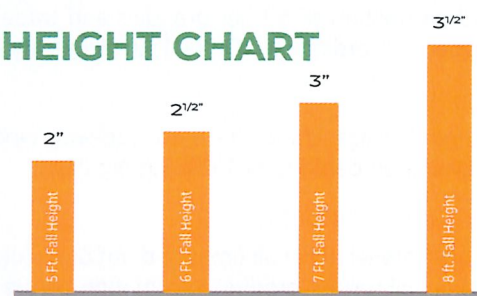
MIDDLE GRAY



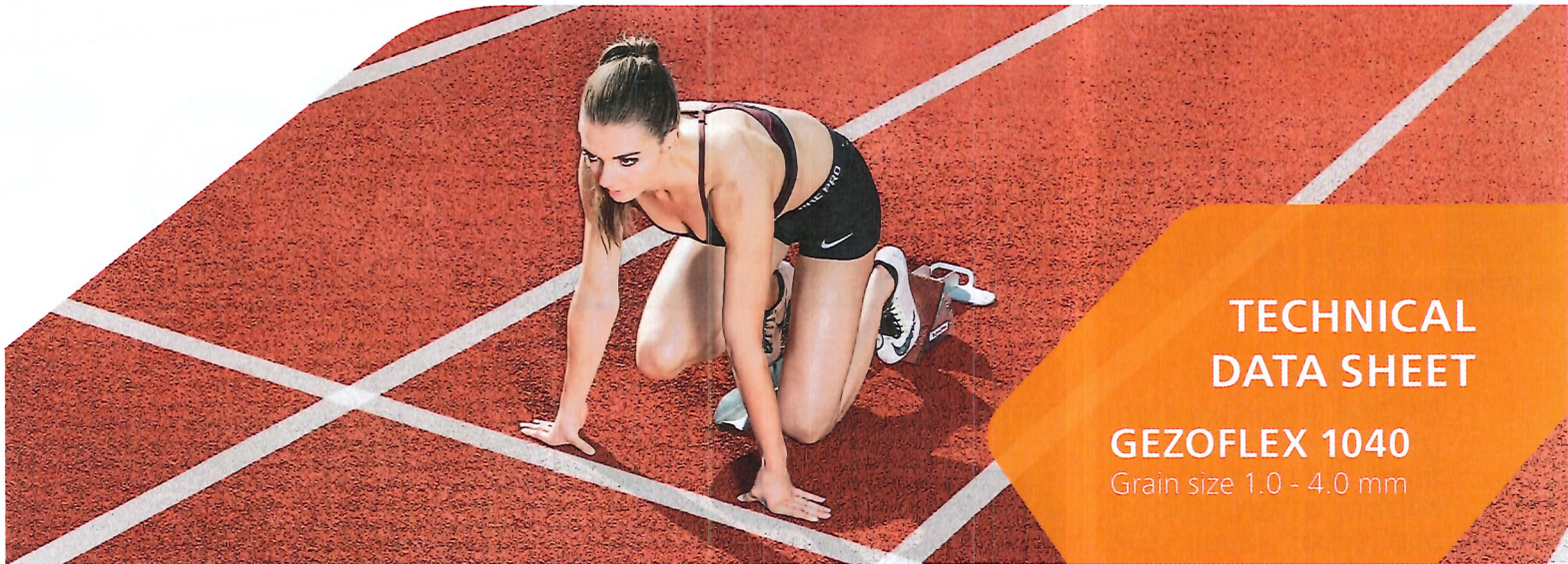
DARK GREY

**Premium colors subject to upcharges*

FALL HEIGHT CHART



706-383-7528
www.rubberdesigns.com



TECHNICAL DATA SHEET

GEZOFLEX 1040

Grain size 1.0 - 4.0 mm

Introduction

The colored GEZOFLEX EPDM rubber granules are manufactured in Switzerland and in the USA. The sulphur cross-linked material is based on an EPDM rubber (Ethylene Propylene Diene Terpolymer) together with handchosen compound additives of highest quality. Typical applications are athletic tracks and multisport surfaces, playground safety surfaces, prefabricated slabs and rolled goods for various surfacing solutions. The granules can be processed with a one or two component polyurethane binder or coating.

Color range

As per current color range. Please see separate color sheet for detailed information. Special colors on demand.

Quality

GEZOLAN introduced and follows a management system for the „Development and production of rubber granules and trade in elastic flooring systems made of rubber“ according to ISO 9001:2015 Quality Management.

Packaging

25 kg PE-bags, on a 1'000 kg one-way wooden pallet (40 bags). Alternatively available on demand in 1'000 kg big bags.

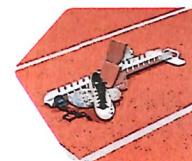
Storage / handling

Keep material dry at all times and out of direct UV radiation while storing. Please respect all further product information before using this product. In order to compensate for minor color deviations (due to natural ingredients), it is recommended to mix material from different batches with one another during installation.



Typical fields of application

Track and field



Playgrounds



Multipurpose



Fitness



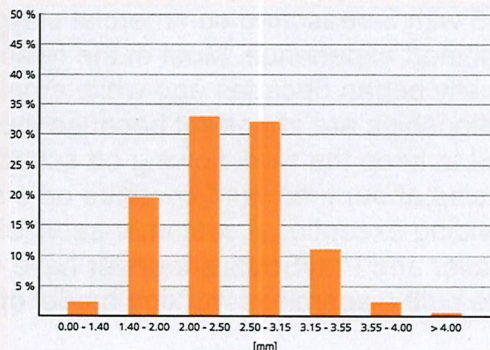
Tennis courts



Water parks and pools



Product properties

General properties	Typical value
Base polymer	EPDM (Ethylen Propylen Diene Terpolymer)
Polymer content	> 20 % (only EPDM)
Grain shape	Angular cut
Grain size	1.0 - 4.0 mm ¹
Grain size distribution	

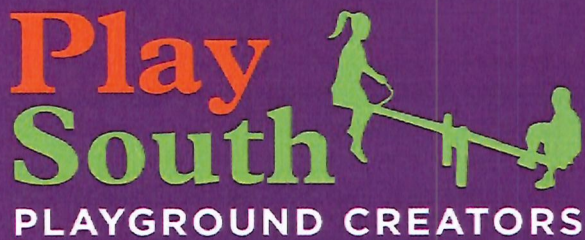
Physical properties	Test method	Typical value
Tensile strength	DIN 53504	> 6 MPa
Elongation at break	DIN 53504	> 600 %
Hardness	DIN ISO 7619-1	65 ± 5 Shore A
Density	DIN EN 1183-1	1.6 g/cm ³
Bulk density	DIN EN ISO 60	630 g/l

Environmental and health properties	Requirement	Pass
Polycyclic aromatic hydrocarbons (PAHs)	REACH Reg. (EC) 1907/2006, Annex XVII entry 50	✓
	AfPS GS 2019:01 Cat. 1	✓
Migration of certain elements	EN 71-3 Safety of toys	✓
Heavy metal leaching	DIN 18035-6 / DIN 18035-7	✓

¹ other grain sizes on request

Disclaimer

The data included in this document are indicative values subject to manufacturing tolerances. It remains the duty of the user to check the suitability of the product for its intended use and to ensure that the goods are suitable in terms of shape and quality for the intended purpose. The available data support the user in deciding whether the products are suitable for the intended purpose. We warrant that our products will meet the written specifications within the tolerances indicated.



About PlaySouth Playground Creators

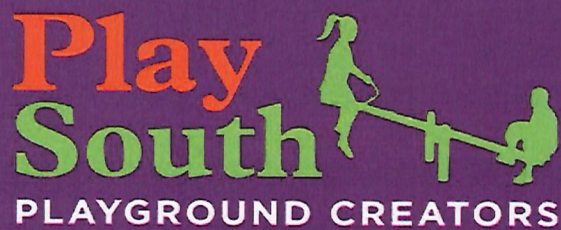
PlaySouth Playground Creators is based in Newnan, Georgia and was established in 2015 with 3 seasoned commercial playground industry veterans with over 60 years combined experience. Most of the relationships we enjoy with our vendors and suppliers actually began decades ago while employed at other playground companies. These relationships are important because they facilitate the timely and accurate deliveries we need to keep the work flowing on schedule and to meet deadlines. We've now doubled the size of our team and continue on a strong growth track because of our commitment to providing exceptional customer service! Additionally, our exclusive sub-contractor installer and PlaySouth's founder have worked together on projects for over 20 years and have built a seamless working model of communication and execution of the projects.

We are proud of our exclusive distributorship of Burke Commercial Playground Equipment throughout the entire state of Georgia, and we have received numerous awards and recognition from Burke for our territory coverage and the excellent customer service we provide to all of our mutual customers across the state. Without a doubt, the combined Burke and PlaySouth warranty coverage gives you the longest protection and lowest cost of ownership in the industry! We also represent other strong manufacturers in the recreation products industry so that we can offer shades, steel shelters, site amenities, field and court equipment and related products for your facilities.

The PlaySouth team stands ready to accomplish the work outlined in our proposal. We have the financial strength, well-trained personnel, supplier and subcontractor relationships, and all of the necessary tools and equipment to successfully perform your playground delivery and installation. Our current workload is very manageable, and we can assure you that we continue to have the resources in place to execute this work should it be awarded to us.

Thank you for your consideration of BCI Burke and PlaySouth!

David A. (Andy) Bryant, President
PlaySouth, LLC



Why choose PlaySouth and Burke?

PlaySouth is the exclusive authorized distributor for BCI Burke commercial playground equipment throughout the state of Georgia. Burke is celebrating its Centennial this year – 100 years of manufacturing quality commercial playgrounds all over the world! Our team at PlaySouth has over 75 years of combined experience in the commercial playground industry including sales, project management, installations and ongoing customer support.

PlaySouth contracts exclusively with a playground installation firm over 20 years old, owned and operated by a nationally Certified Playground Safety Inspector. In addition to this CPSI designation the onsite superintendent has been factory trained and certified by Burke at their plant, as well as by the National Playground Contractors Association (NPCA).

WARRANTY PROTECTION:

A strong differentiator between us and our competitors centers around warranty coverage for your new playground purchase. Burke's "Generations Warranty" provides a complete, non-prorated warranty for specific periods of time based on the material. There is **no deduction** for age of the item that fails under the warranty period, and the shipping is **free** for the covered part. What's really different about Burke's factory warranty is that Burke extends new warranty coverage on the replacement part for **the full warranty period all over again!**

In addition to Burke's strong warranty, PlaySouth offers a **Supplemental Warranty** that gives you **free labor** to replace any part provided by Burke under their warranty! This is absolutely the lowest cost of ownership in the industry!! Complete details are in our proposal packet.

PROJECT TIMELINE:

Production/manufacturing – this part of the lead time is seasonally affected. In late fall through the winter months lead times are typically 4-5 weeks from order entry to ship date. Then beginning in March the lead times begin building up to their peak of between 8-12 weeks during the summer and early fall months.

Installation – after the equipment ships, there's about 4-5 business days in transit until our crew receives the shipment and begins work. This project will take approximately 2 weeks of installation time. Start-to-finish, your playground will take us between 8 to 14 weeks from order date until the children are playing on it, depending on the time of year that the order is placed.



PlaySouth Current Clients

Marietta City Schools

Multiple Locations in Marietta- seven different elementary schools
Jimmy Pace 404.580.5598 jpace@marietta-city.k12ga.us
More than \$775,000 in product installation in the last three years

Tift County Parks and Recreation

Puckett Park playground
Tim Petrea: (229)382-3262
\$130,000 in product installation in 2023.

Douglasville Parks and Recreation

Fowler Field Park
Chris Bass bassc@douglasville.gov
More than \$250,000 in product installation in the last 2 years.

Cobb County Parks

Multiple Locations in Cobb County- Mud Creek Soccer, Old Clarkdale Park, East Cobb Park, Traemore Park, Lost Mountain Park, Sweat Mountain Park, Sewell Park
Mackie Temple 678.776.6647 james.temple@cobbcounty.org
More than \$750,000 in product installation in the last three years

Lanier County Schools

Lanier County Elementary School
Gene Culpepper (Superintendent) (229)563-4282 Gene.Culpepper@lanier.k12.ga.us
More than \$350,000 in playground and surfacing installation in July 2023.

Lowndes County Schools- \$123,000
Alpharetta Parks and Recreation- \$125,000
Pace Academy- \$1,135,000
Primrose Academy- \$135,000
DeKalb County Parks- \$795,000
Ben Hill County- \$40,000
First Baptist Lagrange- \$175,000

Fulton County Schools- \$88,000
Fayette County School- \$44,000
Smyrna FUMC- \$225,000
Sixes Property Mgt.- \$325,000
Forsyth County Parks- \$633,000
Fayetteville City Center Park- \$175,000
Antioch Baptist Sylvester- \$50,000

BURKE GENERATIONS WARRANTY®

BCI Burke Company, LLC ("Burke") warrants that all standard products are warranted to be free from defects in materials and workmanship, under normal use and service, for a period of one (1) year from the date of shipment.

We stand behind our products.

In addition, the following products are warranted, under normal use and service from the date of shipment as follows:

- One Hundred (100) Year Limited Warranty on aluminum and steel upright posts (including Intensity®, Synergy®, Nucleus®, Voltage®, Little Buddies®, ELEVATE®, ACTIVATE®, INVIGORATE®) against structural failure due to corrosion, deterioration or workmanship.
- One Hundred (100) Year Limited Warranty on KoreConnect® clamps against structural failure due to corrosion, deterioration or workmanship.
- One Hundred (100) Year Limited Warranty on Hardware (nuts, bolts, washers)
- One Hundred (100) Year Limited Warranty on bolt-through fastening and clamp systems (Synergy®, Intensity®, Nucleus®, Voltage®, Little Buddies®, ELEVATE®).
- Twenty-Five (25) Year Limited Warranty on spring assemblies and aluminum cast animals.
- Fifteen (15) Year Limited Warranty on structure platforms and decks, metal roofs, table tops, bench tops, railings and barriers against structural failure due to materials or workmanship.
- Fifteen (15) Year Limited Warranty on all plastic components including StoneBorders against structural failure due to materials or workmanship.
- Ten (10) Year Limited Warranty on ShadePlay® Canopies fabric, threads, and cables against degradation, cracking or material breakdown resulting from ultra-violet exposure, natural deterioration or manufacturing defects. This warranty is limited to the design loads as stated in the specifications.
- Ten (10) Year Limited Warranty on NaturePlay® Boulders and GFRC products against structural failure due to natural deterioration or workmanship. Natural wear, which may occur with any concrete product with age, is excluded from this warranty.
- Ten (10) Year Limited Warranty on Full Color Custom Signage against manufacturing defects that cause delamination or degradation of the sign. Full Color Custom Signs also carry a two (2) year warranty against premature fading of the print and graphics on the signs.
- Five (5) Year Limited Warranty on Intensity® and RopeVenture® cables and LEVEL X® flex bridge against premature wear due to natural deterioration or manufacturing defects. Determination of premature wear will be at the manufacturer's discretion.
- Five (5) Year Limited Warranty on moving parts, including swing components, against structural failure due to materials or workmanship.
- Five (5) Year Limited Warranty on PlayEnsemble® cables and mallets against defects in materials and workmanship.
- Three (3) Year Limited Warranty on electronic panel speakers, sound chips and circuit boards against electronic failure caused by manufacturing defects.

The warranty stated above is valid only if the equipment is erected in conformity with the layout plan and/or installation instructions furnished by BCI Burke Company, LLC using approved parts; have been maintained and inspected in accordance with BCI Burke Company, LLC instructions. Burke's liability and your exclusive remedy hereunder will be limited to repair or replacement of those parts found in Burke's reasonable judgment to be defective. Any claim made within the above stated warranty periods must be made promptly after discovery of the defect. A part is covered only for the original warranty period of the applicable part. Replacement parts carry the applicable warranty from the date of shipment of the replacement from Burke. After the expiration of the warranty period, you must pay for all parts, transportation and service charges.

Burke reserves the right to accept or reject any claim in whole or in part. Burke will not accept the return of any product without its prior written approval. Burke will assume transportation charges for shipment of the returned product if it is returned in strict compliance with Burke's written instructions.

THE FOREGOING WARRANTIES ARE EXCLUSIVE AND IN LIEU OF ANY OTHER WARRANTY, EXPRESS OR IMPLIED, INCLUDING BUT NOT LIMITED TO ANY IMPLIED WARRANTY OF MERCHANTABILITY OR FITNESS FOR A PARTICULAR PURPOSE. IF THE FOREGOING DISCLAIMER OF ADDITIONAL WARRANTIES IS NOT GIVEN FULL FORCE AND EFFECT, ANY RESULTING ADDITIONAL WARRANTY SHALL BE LIMITED IN DURATION TO THE EXPRESS WARRANTIES AND BE OTHERWISE SUBJECT TO AND LIMITED BY THE TERMS OF BURKE'S PRODUCT WARRANTY. SOME STATES DO NOT ALLOW THE EXCLUSION OF CERTAIN IMPLIED WARRANTIES, SO THE ABOVE LIMITATION MAY NOT APPLY TO YOU.

Warranty Exclusions: The above stated warranties do not cover: "cosmetic" defects, such as scratches, dents, marring, or fading; damage due to incorrect installation, vandalism, misuse, accident, wear and tear from normal use, exposure to extreme weather; immersion in salt or chlorine water, unauthorized repair or modification, abnormal use, lack of maintenance, or other cause not within Burke's control; and

Limitation of Remedies: Burke is not liable for consequential or incidental damages, including but not limited to labor costs or lost profits resulting from the use of or inability to use the products or from the products being incorporated in or becoming a component of any other product. If, after a reasonable number of repeated efforts, Burke is unable to repair or replace a defective or nonconforming product, Burke shall have the option to accept return of the product, or part thereof, if such does not substantially impair its value, and return the purchase price as the buyer's entire and exclusive remedy. Without limiting the generality of the foregoing, Burke will not be responsible for labor costs involved in the removal of products or the installation of replacement products. Some states do not allow the exclusion of incidental damages, so the above exclusion may not apply to you.

The environment near a saltwater coast can be extremely corrosive. Some corrosion and/or deterioration is considered "normal wear" in this environment. Product installed within 500 yards of a saltwater shoreline will only be covered for half the period of the standard product warranty, up to a maximum of five years, for defects caused by corrosion. Products installed in direct contact with saltwater or that are subjected to salt spray are not covered by the standard warranty for any defects caused by corrosion.

Contact your local Burke Representative for warranty information regarding Burke Turf® and Burke Tile products.

Terms of Sale

Pricing: Prices published in this catalog are in USD, are approximate and do not include shipping & handling, surfacing, installation nor applicable taxes. All prices are subject to change without notice. Contact your Burke representative for current pricing. Payments are to be made in USD.

Weights: Weights are approximate and may vary with actual orders.

Installation: All equipment is shipped unassembled. For a list of factory-certified installers in your area, please contact your Burke representative.

Specifications: Product specifications in this catalog were correct at the time of publication. However, product improvements are ongoing at Burke, and we reserve the right to change or discontinue specifications without notice.

Loss or Damage in Transit: A signed bill of lading is our receipt from a carrier that our shipment to you was complete and in good condition upon arrival. Before you sign, please check the Bill of Lading carefully when the shipment arrives to make sure nothing is missing and there are no damages. Once the shipment leaves our plant, we are no longer responsible for any damage, loss or shortage.

For more information regarding the warranty, call Customer Service at 920-921-9220 or 1-800-356-2070.

01/2023

SUPPLEMENTAL PLAYGROUND WARRANTY

For Burke playgrounds installed by PlaySouth Playground Creators

Customer Name _____

Project Name _____

In addition to BCI Burke's non-prorated Generations Warranty, PlaySouth Playground Creators will at no additional cost to you, perform **free replacement** of any part failure covered under Burke's warranty! After our receipt of the replacement parts from Burke, these warranty repairs are performed by factory trained and industry certified personnel to assure you that your new playground will continue to provide fun, safe and durable play for years to come!

This zero-cost warranty provides you with the absolute lowest cost of ownership!

*See BCI Burke's Generations Warranty for complete details.

for PlaySouth Playground Creators

Date





Unknown Obstacles and Rock Clause

The installation of playground equipment, shade structures, site furnishings and similar products requires the excavation of soil to install concrete footers. It is not uncommon to encounter small loose rock, small tree roots, packed clay or similar natural items in the soil as we dig, which is considered part of our standard operating procedures. However, on infrequent occasions we may encounter more substantial underground obstacles that either could not be anticipated, or are not native to the original soil. These include (but are not limited to) solid rock, below-grade tree stumps, old foundations and/or concrete footers, fill material or other such unknown obstacles.

If during the progress of the work, preexisting subsurface or latent physical conditions are encountered at the site, differing materially from the scope of work indicated in the contract, or if preexisting unknown physical conditions of an unusual nature, differing materially from those ordinarily encountered and generally recognized as inherent in the typical work provided for in the contract, are encountered at the site, the party discovering such conditions shall promptly notify the other party in writing of the specific differing site conditions before the affected remedial work is performed.

Typically, if any unknown underground obstacles are encountered that impede the progress of the excavation more than 15 minutes, we will inform the customer immediately and request a change order to be executed on a time and material basis for remedial of the underground obstacle(s). Hourly rates will be specified in the change order. There will be a minimum of a 1-hour labor charge or a \$50.00 minimum charge (whichever is higher), plus reimbursement of equipment rental fees (if any) on all change orders.

Request for Taxpayer Identification Number and Certification

► Go to www.irs.gov/FormW9 for instructions and the latest information.

Give Form to the
requester. Do not
send to the IRS.

Print or type.
See Specific Instructions on page 3.

1 Name (as shown on your income tax return). Name is required on this line; do not leave this line blank. PlaySouth, LLC		
2 Business name/disregarded entity name, if different from above		
3 Check appropriate box for federal tax classification of the person whose name is entered on line 1. Check only one of the following seven boxes. <input type="checkbox"/> Individual/sole proprietor or single-member LLC <input type="checkbox"/> C Corporation <input type="checkbox"/> S Corporation <input type="checkbox"/> Partnership <input type="checkbox"/> Trust/estate <input checked="" type="checkbox"/> Limited liability company. Enter the tax classification (C=C corporation, S=S corporation, P=Partnership) ► S Note: Check the appropriate box in the line above for the tax classification of the single-member owner. Do not check LLC if the LLC is classified as a single-member LLC that is disregarded from the owner unless the owner of the LLC is another LLC that is not disregarded from the owner for U.S. federal tax purposes. Otherwise, a single-member LLC that is disregarded from the owner should check the appropriate box for the tax classification of its owner. <input type="checkbox"/> Other (see instructions) ►	4 Exemptions (codes apply only to certain entities, not individuals; see instructions on page 3): Exempt payee code (if any) _____ Exemption from FATCA reporting code (if any) _____ <small>(Applies to accounts maintained outside the U.S.)</small>	
5 Address (number, street, and apt. or suite no.) See instructions. PO Box 492467	Requester's name and address (optional)	
6 City, state, and ZIP code Atlanta, GA 30349		
7 List account number(s) here (optional)		

Part I Taxpayer Identification Number (TIN)

Enter your TIN in the appropriate box. The TIN provided must match the name given on line 1 to avoid backup withholding. For individuals, this is generally your social security number (SSN). However, for a resident alien, sole proprietor, or disregarded entity, see the instructions for Part I, later. For other entities, it is your employer identification number (EIN). If you do not have a number, see *How to get a TIN*, later.

Note: If the account is in more than one name, see the instructions for line 1. Also see *What Name and Number To Give the Requester* for guidelines on whose number to enter.

Social security number								
			-			-		
or								
Employer identification number								
8	1	-	0	6	9	6	2	3

Part II Certification

Under penalties of perjury, I certify that:

- The number shown on this form is my correct taxpayer identification number (or I am waiting for a number to be issued to me); and
- I am not subject to backup withholding because: (a) I am exempt from backup withholding, or (b) I have not been notified by the Internal Revenue Service (IRS) that I am subject to backup withholding as a result of a failure to report all interest or dividends, or (c) the IRS has notified me that I am no longer subject to backup withholding; and
- I am a U.S. citizen or other U.S. person (defined below); and
- The FATCA code(s) entered on this form (if any) indicating that I am exempt from FATCA reporting is correct.

Certification instructions. You must cross out item 2 above if you have been notified by the IRS that you are currently subject to backup withholding because you have failed to report all interest and dividends on your tax return. For real estate transactions, item 2 does not apply. For mortgage interest paid, acquisition or abandonment of secured property, cancellation of debt, contributions to an individual retirement arrangement (IRA), and generally, payments other than interest and dividends, you are not required to sign the certification, but you must provide your correct TIN. See the instructions for Part II, later.

Sign Here	Signature of U.S. person ► 	Date ► Jan 10, 2023
-----------	--	----------------------------

General Instructions

Section references are to the Internal Revenue Code unless otherwise noted.

Future developments. For the latest information about developments related to Form W-9 and its instructions, such as legislation enacted after they were published, go to www.irs.gov/FormW9.

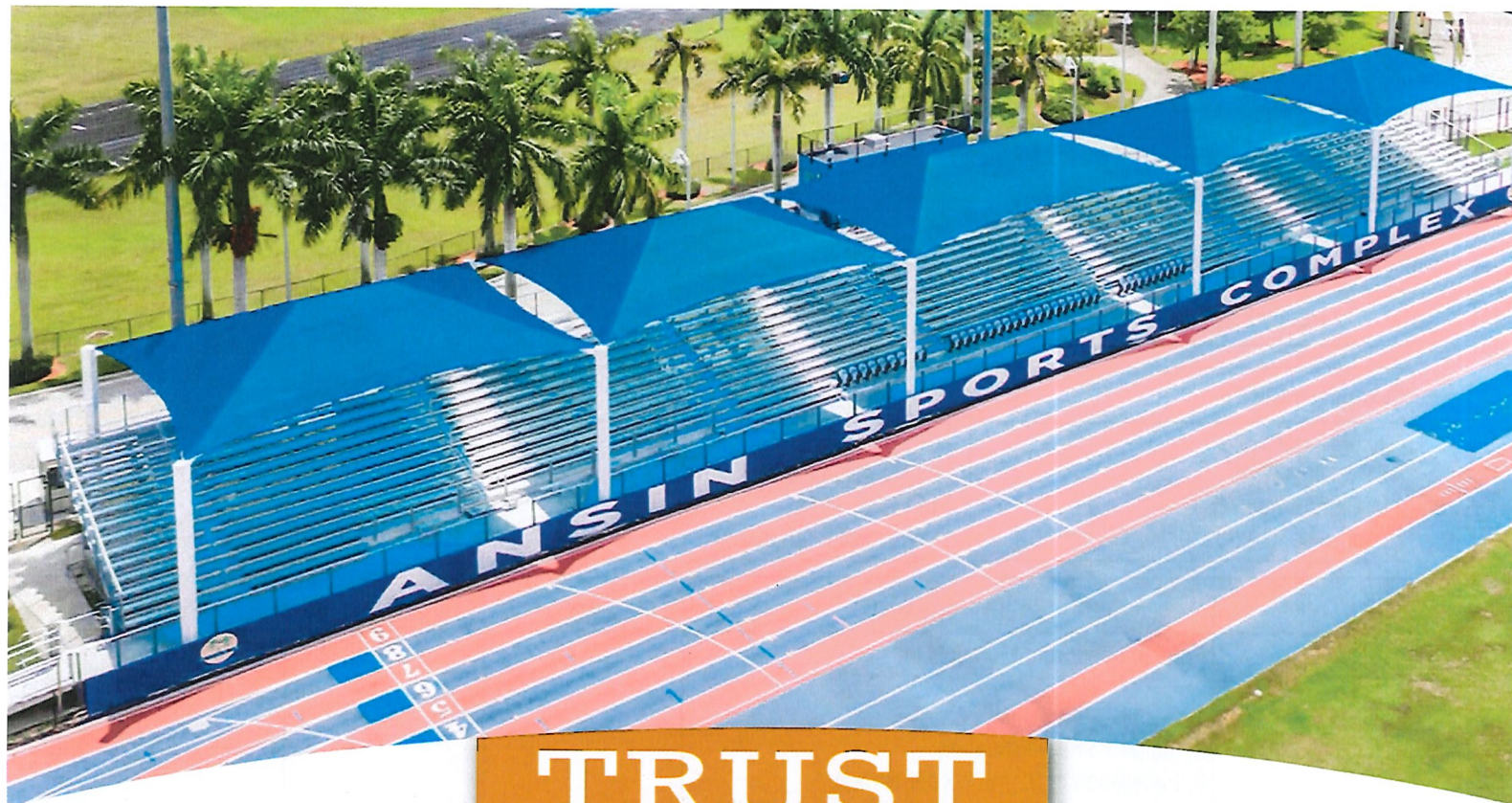
Purpose of Form

An individual or entity (Form W-9 requester) who is required to file an information return with the IRS must obtain your correct taxpayer identification number (TIN) which may be your social security number (SSN), individual taxpayer identification number (ITIN), adoption taxpayer identification number (ATIN), or employer identification number (EIN), to report on an information return the amount paid to you, or other amount reportable on an information return. Examples of information returns include, but are not limited to, the following.

- Form 1099-INT (interest earned or paid)

- Form 1099-DIV (dividends, including those from stocks or mutual funds)
 - Form 1099-MISC (various types of income, prizes, awards, or gross proceeds)
 - Form 1099-B (stock or mutual fund sales and certain other transactions by brokers)
 - Form 1099-S (proceeds from real estate transactions)
 - Form 1099-K (merchant card and third party network transactions)
 - Form 1098 (home mortgage interest), 1098-E (student loan interest), 1098-T (tuition)
 - Form 1099-C (canceled debt)
 - Form 1099-A (acquisition or abandonment of secured property)
- Use Form W-9 only if you are a U.S. person (including a resident alien), to provide your correct TIN.

If you do not return Form W-9 to the requester with a TIN, you might be subject to backup withholding. See *What is backup withholding*, later.



TRUST — *the* — EXPERTS

For over a decade, our customers have entrusted us to provide safe and affordable playground and recreational equipment. Our team of Certified General Contractors and Playground Safety Inspectors will insure that your project is completed to perfection, providing truly turnkey service, with every step of the process from planning and budgeting, through the installation being handled under one roof.



1-800-573-7529 | www.proplaygrounds.com



Pro Playgrounds
8490 Cabin Hill Road
Tallahassee, FL 32311

Quote

Project Name
PG w/ Rubber Mulch



Date	Estimate #
2/26/2024	26456



Customer / Bill To
City of Hogansville ATTN: Niles Ford 111 High Street Hogansville, GA 30230

Ship To
City of Hogansville ATTN: Niles Ford 111 High Street Hogansville, GA 30230

WE WILL BEAT ANY PRICE BY 5%!

Item	Description	Qty	Cost	Total:
RMC	Ready Mix Concrete 2500 PSI MIN	14	200.00	2,800.00
	SURFACING MATERIALS			
RMSKGS-CED...	Cedar Red Playground Mulch - 2000lb Super Sack	15	570.00	8,550.00
GFAB	Weed Barrier	2,208	0.20	441.60
LPIN	Landscape pins for securing underlayment	3	71.50	214.50
22-2BY2408	8" Border Timber With Spike	52	29.00	1,508.00
Shipping	Combined Shipping and Freight Charges	1	1,650.00	1,650.00
	RENTALS, LABOR, and INSTALLATION			
22-Rentals	Rentals for Installations	1	6,914.60	6,914.60
LBR	Labor and Installation - PG Equipment	1	16,689.38	16,689.38
LBR	Labor and Installation - Shade Structure	1	11,126.25	11,126.25
DSC	**Discount Valid Until 3/27/24**		-7,313.08	-7,313.08

AGREED AND ACCEPTED:

If the above total price, scope of work, specifications, terms and conditions are acceptable, sign below indicating your acceptance and authorization for Pro Playgrounds to proceed with the work and/or sales transaction described in this quotation. Upon signature and payment in accordance with this quote, Pro Playgrounds will proceed with the work and/or sales transaction.

Signature

Name / Title

Date

Subtotal: \$143,999.00

Sales Tax: (7.5%) \$0.00

Total: \$143,999.00

Terms and Conditions - Price valid for 30 days and subject to change. 1. If installation is not included with your purchase, client will be responsible for coordinating, receiving and unloading of all goods, delivery drivers will not help unload goods. 2. Client will be responsible to inspect goods for defect, damage or missing parts, any deficiency or missing parts must be noted on delivery slip. 3. Client will be responsible for costs due to cancelled or missed delivery appointments. 4. Client has reviewed all items, colors and descriptions on this quote for accuracy and correctness. 5. If quote includes installation of goods, the installation is subject to the terms and conditions of Pro Playgrounds "Standard Installation Agreement" a copy of which may be obtained from your Sales Representative.

1-800-573-7529 | www.proplaygrounds.com

SHADE COLOR OPTIONS



Frames

Backed by a [5-year limited warranty](#).

Gloss

	Red		Royal Purple
	Orange		Burgundy
	Butterscotch		Beige
	Yellow		Vanilla
	Spring Green		Brown
	Chartreuse		Black
	Light Green		White
	Green	Matte, Textured & Metallic	
	Sage		Champagne
	Sky Blue		Metallic
	Blue		Bronze
	Periwinkle		Starlight

RainGuard® Waterproof Shade Fabric

For our Single Post Waterproof Umbrella.

Backed by a [10-year limited warranty](#).



Traditional Fabric

This selection of fabric colors are California Fire Marshal certified, fire retardant, and pass the NFPA 701 or ASTM E84 tests. Colors marked with an asterisk are available as both flame retardant and non-flame retardant. Backed by a [10-year limited warranty](#).

Natural* Shade Factor: 76.2% UV Blocking: 93%	Beige Shade Factor: 87% UV Blocking: 97%	NEW! Desert Sand* Shade Factor: 86% UV Blocking: 93%	Latte Shade Factor: 90% UV Blocking: 95%	Rivergum Green* Shade Factor: 88.7% UV Blocking: 92.9%	Lime Shade Factor: 79% UV Blocking: 95%
Mint Green Shade Factor: 93% UV Blocking: 95%	Forest Green Shade Factor: 94% UV Blocking: 96%	Brunswick Green* Shade Factor: 94% UV Blocking: 94.7%	Turquoise* Shade Factor: 86% UV Blocking: 91.5%	True Blue Shade Factor: 89% UV Blocking: 93%	Sky Blue* Shade Factor: 89% UV Blocking: 92.2%
NEW! Aquatic Blue* Shade Factor: 85.6% UV Blocking: 91.1%	Navy Blue* Shade Factor: 93.6% UV Blocking: 94.4%	NEW! Royal Purple* Shade Factor: 87.7% UV Blocking: 91.1%	Sun Blaze Shade Factor: 91% UV Blocking: 94%	Cayenne* Shade Factor: 85.3% UV Blocking: 92.4%	Cedar* Shade Factor: 87.3% UV Blocking: 93.6%
Yellow* Shade Factor: 77.6% UV Blocking: 95.5%	Brown Shade Factor: 93% UV Blocking: 95%	Pearl Onyx Shade Factor: 86% UV Blocking: 94%	Silver Shade Factor: 93% UV Blocking: 95%	Steel Gray* Shade Factor: 90.9% UV Blocking: 94.3%	Midnight Shade Factor: 98% UV Blocking: 98%

Dual Shade Fabric

Available for an upcharge for our Hypar Umbrella, Triangle Sail, and Hyperbolic Sail. Backed by a [10-year limited warranty](#).

Citrus Shade Factor: 87% UV Blocking: 91.9%	Sunburst Shade Factor: 75.2% UV Blocking: 90.6%	Macaw Shade Factor: 83.3% UV Blocking: 90.7%	Chameleon Shade Factor: 86.4% UV Blocking: 90.3%	Topaz Shade Factor: 85.8% UV Blocking: 90.6%	Amazonia Shade Factor: 91.1% UV Blocking: 92.4%
Savanna Shade Factor: 80.1% UV Blocking: 92.3%	Cobblestone Shade Factor: 90.3% UV Blocking: 93.6%	Gold Rush Shade Factor: 88.3% UV Blocking: 91.5%	Capri Shade Factor: 83.9% UV Blocking: 92.1%	Santorini Shade Factor: 83.3% UV Blocking: 92.2%	Maldives Shade Factor: 88.4% UV Blocking: 90.9%