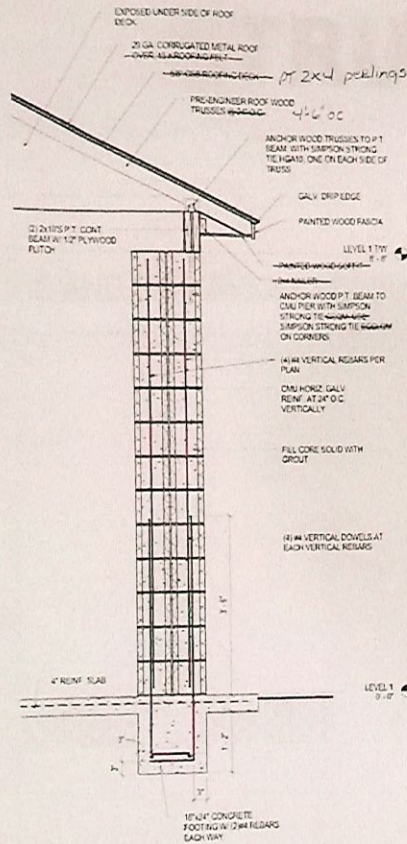
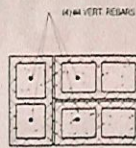


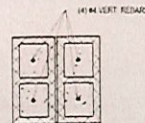
1 FLOOR PLAN - PAVILION  
1/4" = 1'-0"



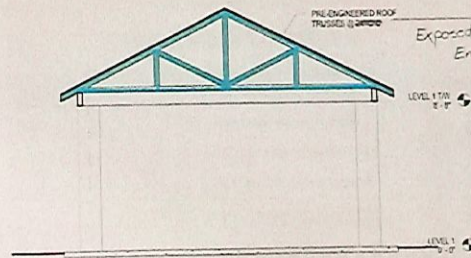
6 TYP PIER SECTION @ PAVILION  
3/4" = 1'-0"



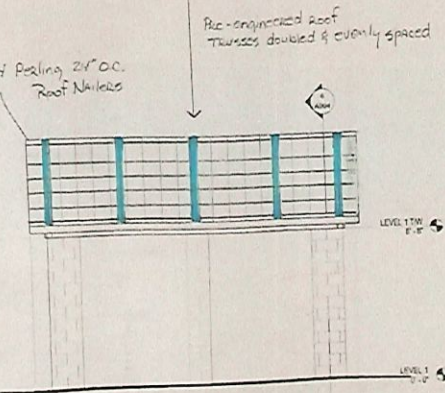
7 LEVEL 1 PAVILION - PIER PLAN DETAIL  
1" = 1'-0"



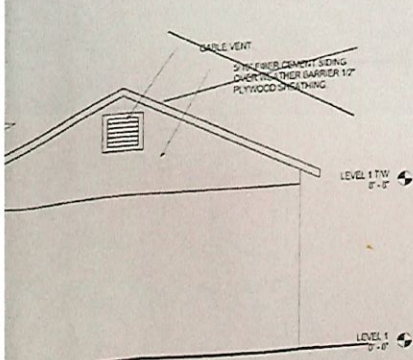
8 LEVEL 1 PAVILION - PIER PLAN DETAIL MID COL  
1" = 1'-0"



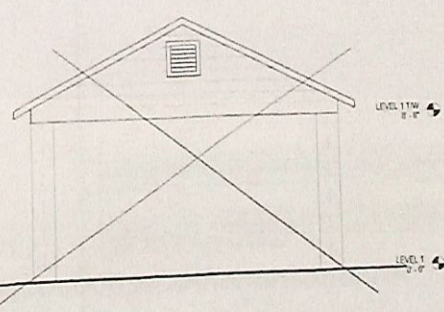
9 PAVILION SECTION  
1/4" = 1'-0"



5 PAVILION ELEVATION - FRONT  
1/4" = 1'-0"



PAVILION ELEVATION - REAR



4 PAVILION ELEVATION - LEFT  
1/4" = 1'-0"